



UNIVERSITY OF MYSORE

YUVARAJA'S COLLEGE (AUTONOMOUS)



(A constituent Autonomous college of the University of Mysore)

Re-Accredited A Grade by NAAC with CGPA of 3.34 and College with Potential for Excellence

Mysore-570 005

Feedback Analysis Report for the year 2018-2019

Importance of Student Feedback: The College aims to offer the best possible environment and learning experience to encourage students to perform to their full potential.

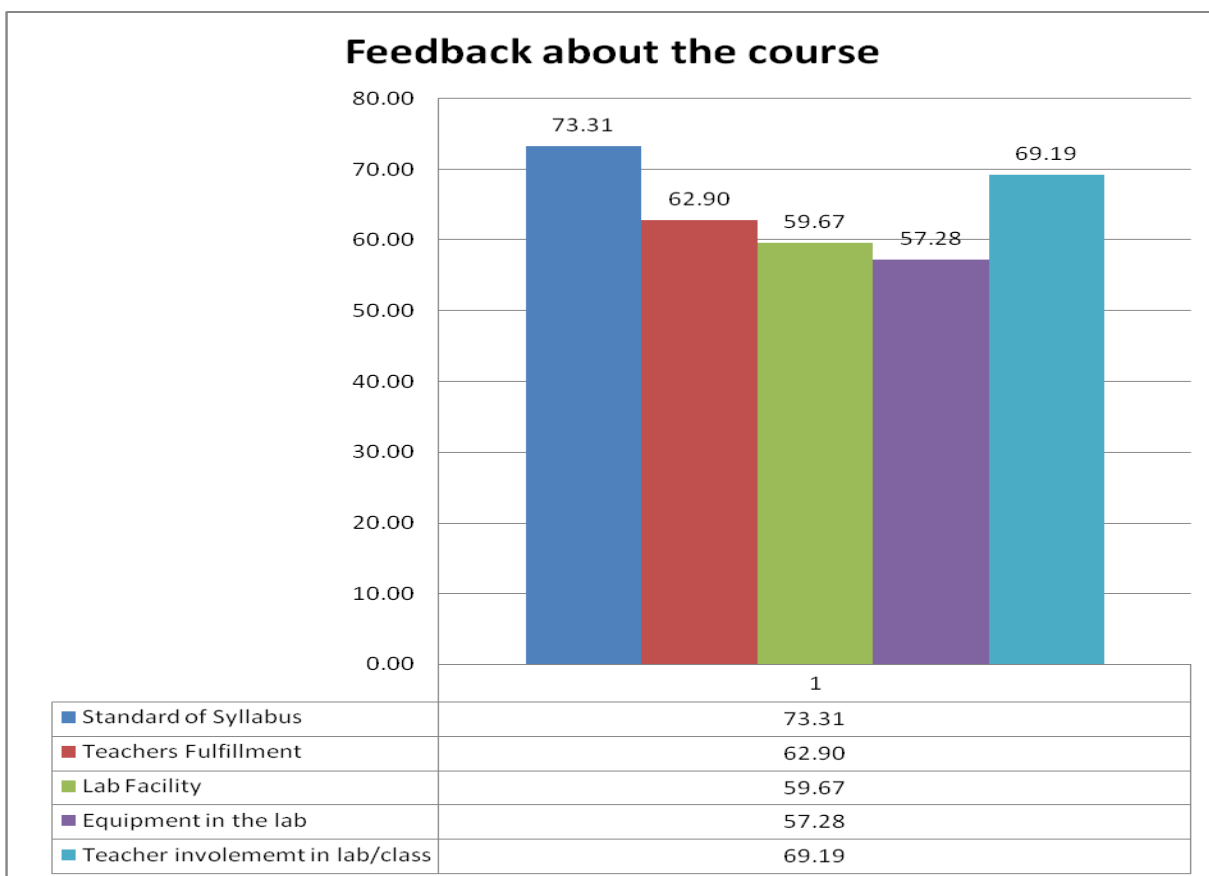
Feedback from students allows the College to evaluate how its service provision is viewed by its most important group of stakeholders, namely its students. Besides providing students with an opportunity to comment on the quality of the teaching and learning environment at the College, feedback ensures that lecturers and Boards of Studies are made aware of problems perceived or encountered by students, and provides an opportunity for the conduct of self-evaluation and revision, where necessary.

Methodology adopted to obtain feedback from the students

Feedbacks from the students were obtained on (1) the completeness of the individual study-units of their choice, (2) the facilities available in the college and (3) their experience in the College.

1. **Feedback about** their experience in the College: The academic excellence of the college is dependent on a number of parameters including
 1. Standard of the Syllabus
 2. Teachers Fulfilment
 3. Lab Facility
 4. Equipment in the lab and
 5. Teacher involvement in lab/class

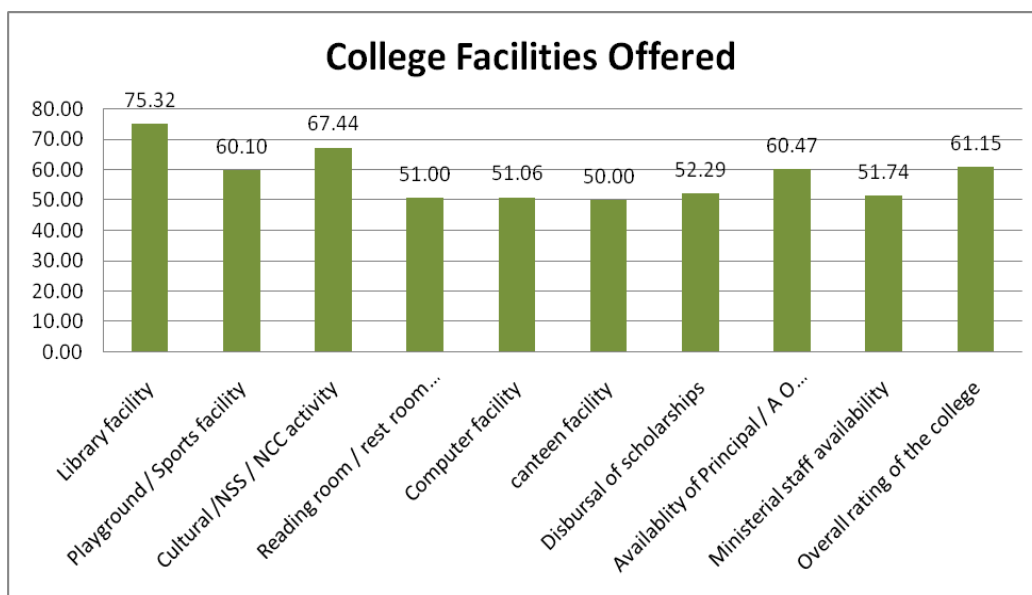
Hence the above parameters were considered and students were asked to give their feedbacks. The results of the assessment obtained are displayed in the bar graph shown below. From the bar chart it can be made out 73.31 percent of the students have appreciated the standard of the syllabus which have been framed keeping the progression of the students. Of the total, 69.19% have given positive note on the teachers' involvement in lab/class. The steady increase in the enrolment of the students to various courses being offered by the college warrants better lab facility and number of equipments as can be made out from 57.28% and 59.67% respectively.



2. Feedback about the facilities available in the college: Feedback from the students was obtained on the following facilities being offered by the college.

1. Library facility
2. Playground / Sports facility
3. Cultural /NSS / NCC activity
4. Reading room / rest room facility
5. Computer facility
6. canteen facility
7. Disbursal of scholarships
8. Availability of Principal / A O for student in college
9. Ministerial staff availability
10. Overall rating of the college

The following graph explains the opinion about the facilities being offered in the college on the above mentioned ten parameters .



The highly rated facilities are Library facility (75.32) followed by Cultural /NSS / NCC activity(67.44). The least rated facilities are Canteen facility (50.00) and reading room facility (51.00). The college council discussed the issues and measures are taken to improve the facilities from the coming academic year

1. Students feedback on teachers:

HIGHLIGHTS OF STUDENTS FEEDBACK ANALYSIS during the year 2018-19

The overall rating of the college against 12 parameters (mentioned below) is 81.18% . Ratings of the individual parameters are shown below.

Sl. No.	Question	%
1	Preparation for class	82.25
2	Punctuality in the class	82.64
3	Planning and completion of the syllabus on time	81.89
4	Presentation clarity (concept, ideas, explanation etc.,)	79.88
5	Teaching methodology (blackboard, chart or power point)	79.84
6	Communication / presentation skill	80.17
7	Encourage students for interaction	81.37
8	Ability to clarify doubts in the class	81.60
9	Provide the summary at the end of the class	77.23
10	Treats all the students equally / without prejudice	85.52
11	Study materials provided by the teacher	79.83
12	Assessment graded fairly	81.90
Overall %		81.18

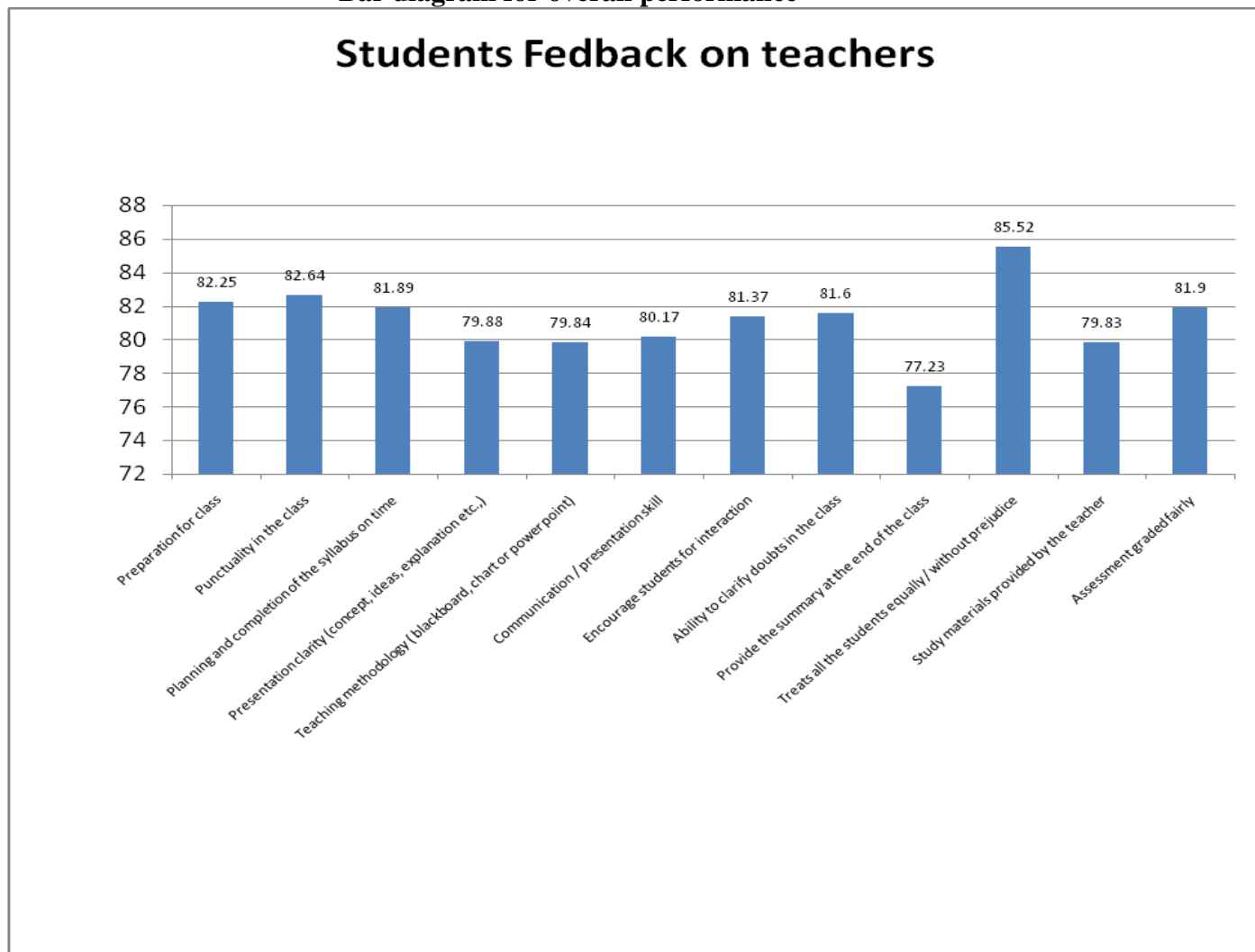
Highly rated parameters

1. Treats all the students equally / without prejudice – 85.52%
2. Punctuality in the class – 82.64%

Least rated parameters

1. Provide the summary at the end of the class - 77.23%
2. Study materials provided by the teacher - 79.83%

Bar diagram for overall performance



About the departments:

Highly rated departments:	
Environmental science	98.84%
Molecular Biology	96.70 %
English	95.03%
Department wise Overall performance:	
Department of Molecular Biology	
Overall performance of the Department	96.70 %
Highly rated parameters:	

Preparation for class	99.02%
Punctuality in the class	99.00%
Least rated parameters:	
Assessment graded fairly	89.84%
Study materials provided by the teacher	90.95%
2. Department of Food Science & Nutrition	
Overall performance of the Department	61.11%
Highly rated parameters:	
Encourage students for interaction	61.61%
Assessment graded fairly	62.36%
Least rated parameters:	
Planning and completion of the syllabus on time	61.96%
Provide the summary at the end of the class	62.86%
3. Department of English	
Overall performance of then Department	95.03%
Highly rated parameters:	
Communication / presentation skill	98.08%
Preparation for class	98.08%
Least rated parameters:	
Assessment graded fairly	86.54%
Study materials provided by the teacher	87.82%
4. Department of Kannada	
Overall performance of then Department	78.52%
Highly rated parameters:	
Treats all the students equally / without prejudice	83.93%
Encourage students for interaction	81.35%
Least rated parameters:	
Teaching methodology (blackboard, chart or power point)	70.25%
Punctuality in the class	75.30%
5. Department of Computer Science	
Overall performance of then Department	84.87%
Highly rated parameters:	
Regularity in taking classes	81.00%
Treats all the students equally / without prejudice	75.00%
Least rated parameters:	
Provide the summary at the end of the class/lecture	61.00%
The teacher plans every lesson meticulously and deliver the same	61.00%
6. Department of Mathematics	
Overall performance of the Department	97.06%
Highly rated parameters:	
Encourage students for interaction	99. 26%
Planning and completion of the syllabus on time	98.53%
Least rated parameters:	
Punctuality in the class	90.44%
Provide the summary at the end of the class	94.85%
7. Department of Biochemistry	
Overall performance of then Department	81.81%

Highly rated parameters:	
Treats all the students equally / without prejudice	86.80%
Study materials provided by the teacher	86.09%
Least rated parameters:	
Provide the summary at the end of the class	77.21%
Communication / presentation skill	77.97%
8. Department of Environment Science	
Overall performance of then Department	98.84%
Highly rated parameters	
Preparation for class	100%
Punctuality in the class	100%
Least rated parameters	
Provide the summary at the end of the class	91.67%
Presentation clarity (concept, ideas, explanation etc.,)	94.44%
9. Department of Zoology	
Overall performance of then Department	68.05%
Highly rated parameters:	
Treats all the students equally / without prejudice	76.55%
Punctuality in the class	76.28%
Least rated parameters:	
Provide the summary at the end of the class	61.91%
Encourage students for interaction	63.34%
10. Department of Geology	
Overall performance of then Department	90.13%
Highly rated parameters:	
Treats all the students equally / without prejudice	93.45%
Assessment graded fairly	92.26%
Least rated parameters:	
Provide the summary at the end of the class	87.50%
Presentation clarity (concept, ideas, explanation etc.,)	88.10%
11. Department of Physics	
Overall performance of then Department	74.68%
Highly rated parameters:	
Punctuality in the class	86.49%
Treats all the students equally / without prejudice	85.68%
Least rated parameters:	
Encourage students for interaction	61.26%
Provide the summary at the end of the class	67.98%
12. Department of Chemistry	
Overall performance of then Department	79.80%
Highly rated parameters:	
Treats all the students equally / without prejudice	88.19%
Punctuality in the class	81.24%
Least rated parameters:	
Study materials provided by the teacher	74.13%
Provide the summary at the end of the class	74.15%
13. Department of Sericulture	

Overall performance of then Department	84.90%
Highly rated parameters:	
Treats all the students equally / without prejudice	87.19%
Assessment graded fairly	87.09%
Least rated parameters:	
Teaching methodology (blackboard, chart or power point)	81.35%
Planning and completion of the syllabus on time	82.23%
<u>14. Department of Botany</u>	
Overall performance of then Department	80.45%
Highly rated parameters:	
Planning and completion of the syllabus on time	83.96%
Punctuality in the class	83.27%
Least rated parameters:	
Assessment graded fairly	75.86 %
Provide the summary at the end of the class	76.73%
<u>15. Department of Statistics</u>	
Overall performance of then Department	84.58%
Highly rated parameters:	
Ability to clarify doubts in the class	90.00%
Punctuality in the class	90.00%
Least rated parameters:	
Provide the summary at the end of the class	76.67%
Study materials provided by the teacher	79.17%
<u>16. Department of Sanskrit</u>	
Overall performance of then Department	91.86%
Highly rated parameters:	
Ability to clarify doubts in the class	85.68%
Treats all the students equally / without prejudice	84.35%
Least rated parameters:	
Encourage students for interaction	62.26%
Provide the summary at the end of the class	69.98%
<u>17. Department of Microbiology</u>	
Overall performance of then Department	69.83%
Highly rated parameters:	
Treats all the students equally / without prejudice	79.70%
Assessment graded fairly	75.22%
Least rated parameters:	
Study materials provided by the teacher	63.16%
Provide the summary at the end of the class	64.91%
<u>18. Department of Hindi</u>	
Overall performance of then Department	78.75%
Highly rated parameters:	
Treats all the students equally / without prejudice	95%
Assessment graded fairly	95%
Least rated parameters:	
Teaching methodology (blackboard, chart or power point)	60%
Presentation clarity (concept, ideas, explanation etc.,)	65%

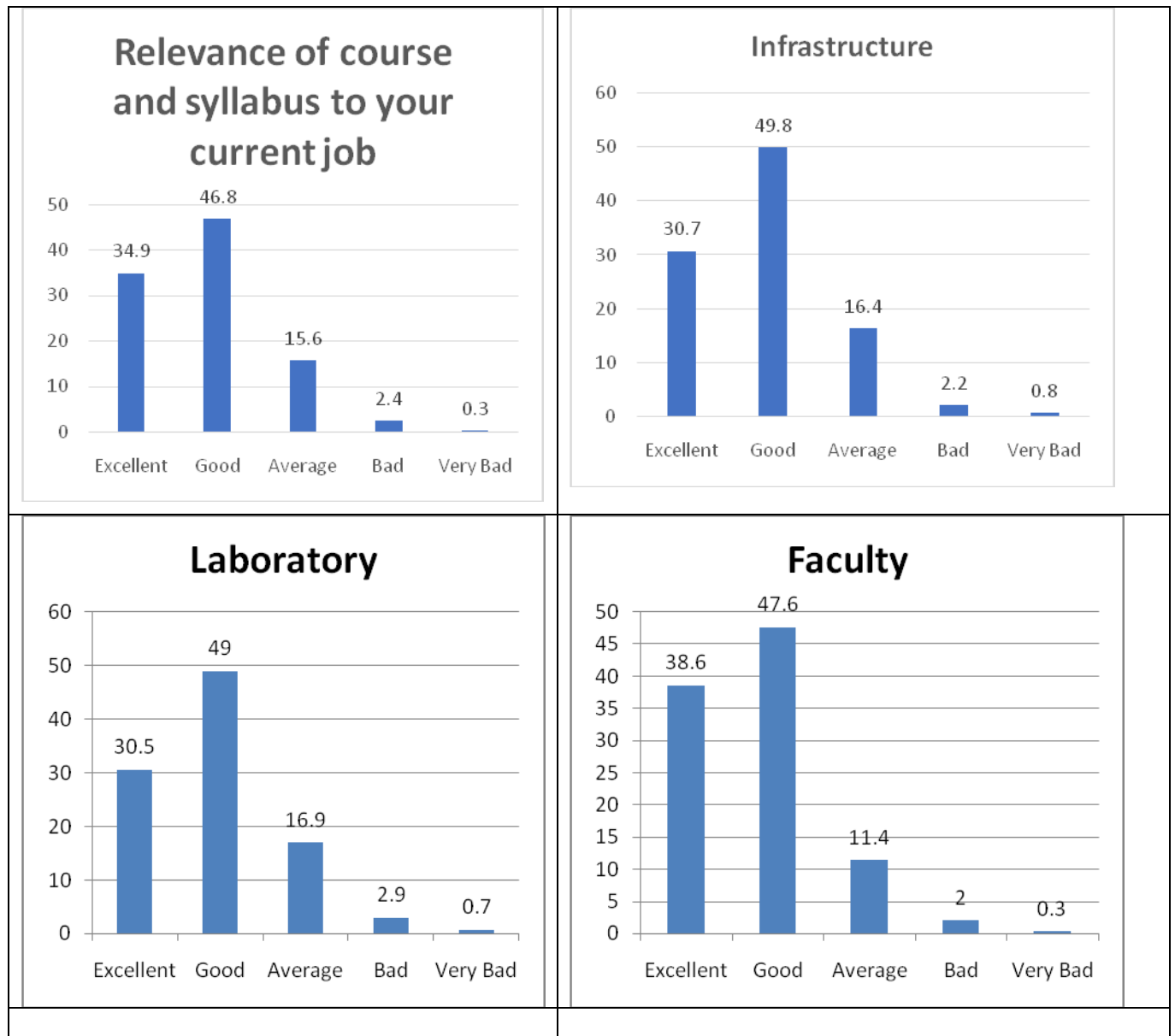
19. Department of Electronics	
Overall performance of then Department	73.61%
Highly rated parameters:	
Punctuality in the class	85.59%
Treats all the students equally / without prejudice	84.45%
Least rated parameters:	
Provide the summary at the end of the class	67.91%
Encourage students for interaction	65.34%
20. Department of Bio-Technology	
Overall performance of then Department	63.13%
Highly rated parameters:	
Treats all the students equally / without prejudice	69.55%
Punctuality in the class	61.98%
Least rated parameters:	
Provide the summary at the end of the class	61.91%
Encourage students for interaction	61.29%
21. Department of Management Science	
Overall performance of then Department	74.50%
Highly rated parameters:	
Planning and completion of the syllabus on time	79.61%
Treats all the students equally / without prejudice	76.47%
Least rated parameters:	
Provide the summary at the end of the class	65.91%
Planning and completion of the syllabus on time	64.02%

2. Feedback Received from Alumni :

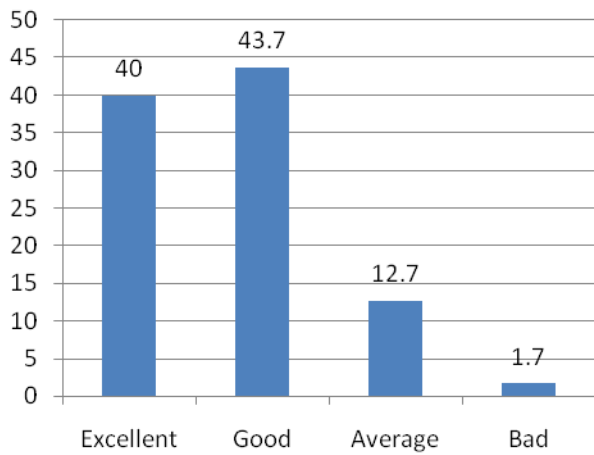
This questionnaire is designed to make a survey of the institutional feedback. The questionnaire designed with 14 parameters are as follows.

Sl.No	Parameters
1	Relevance of course and syllabus to your current job
2	Infrastructure
3	Laboratory
4	Faculty
5	Library
6	Canteen
7	Administrative (Office) staff
8	Hostel Facilities
9	Admission Procedure
10	Fee structure
11	Campus Environment
12	Job and Placement Opportunity
13	Opportunity / Guidance for higher studies
14	Overall performance of the College

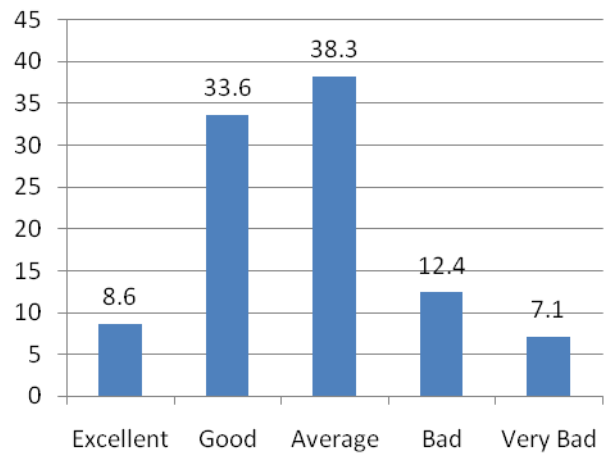
The response of this feedback form consists of five options – Excellent, Good, Average, Bad , Very Bad. The alumnus may select any one option. In Total 590 Alumni of the college participated in the survey. Based on their feedback, the college performed the analysis and the results obtained is shown below in the graphical form. The data is presented in percentages.



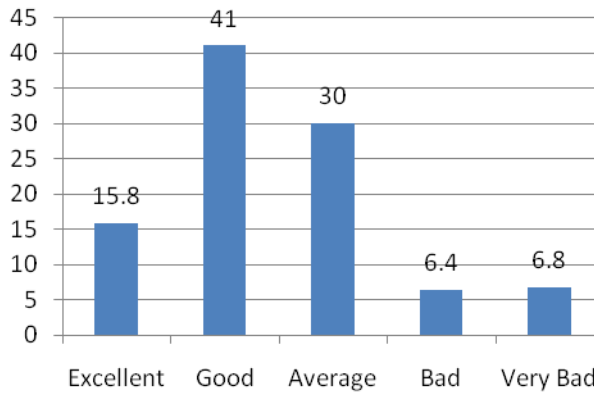
Library



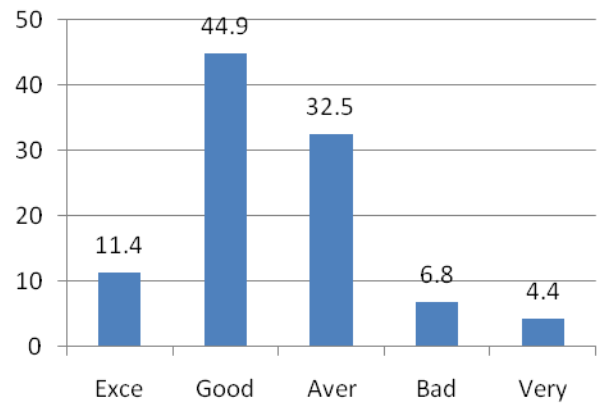
Canteen



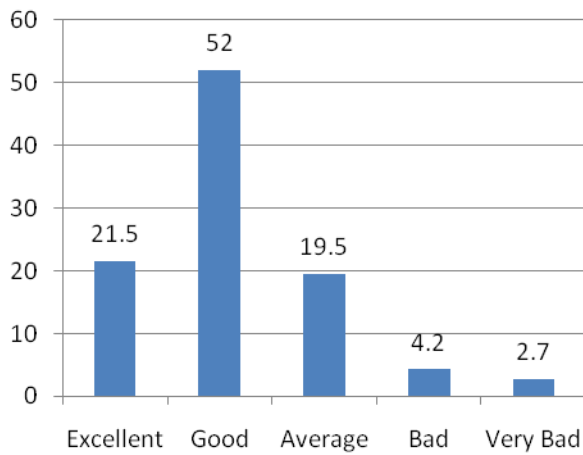
Administrative (Office) staff



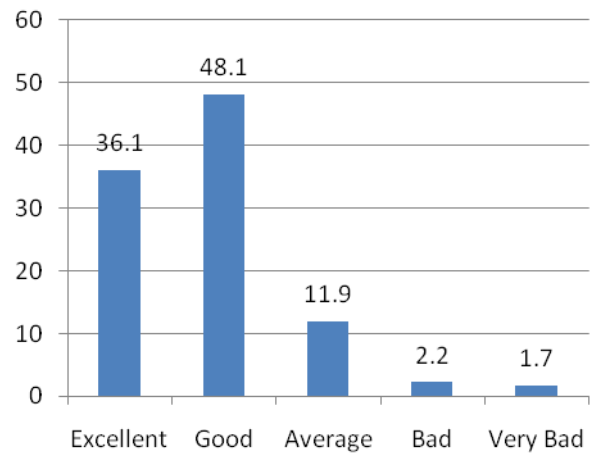
Hostel Facilities



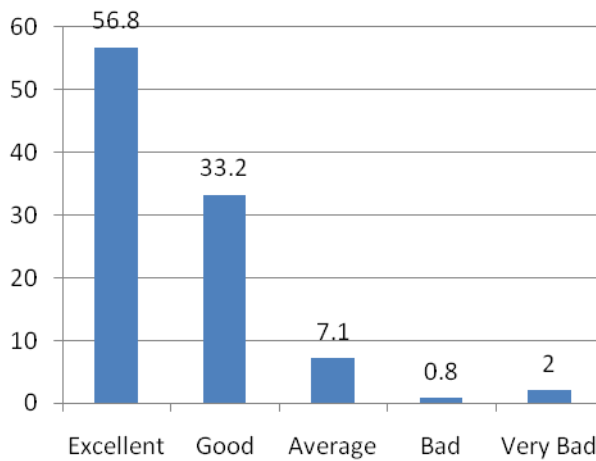
Admission Procedure



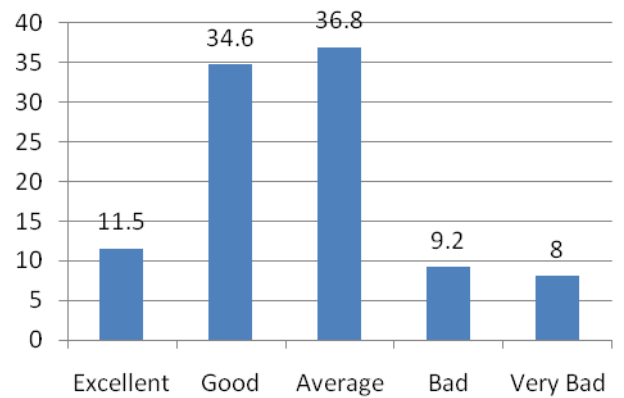
Fee structure

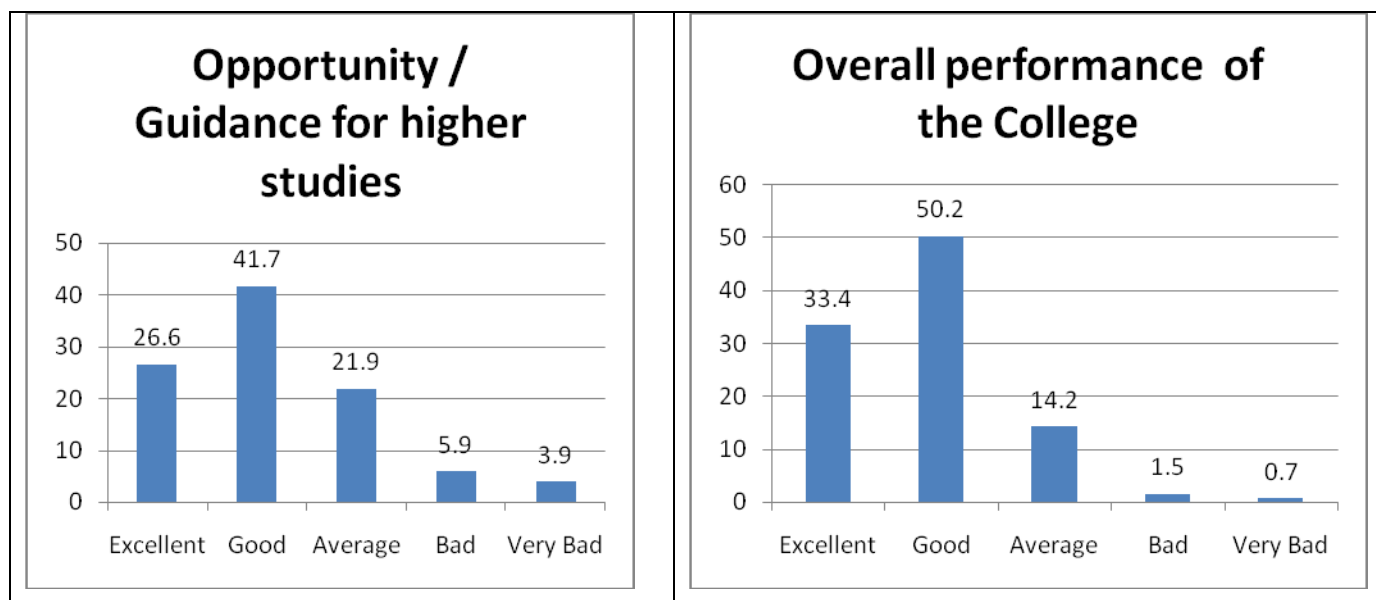


Campus Environment



Job and Placement Opportunity





For Relevance of course and syllabus to your current job 34.9 % expressed Excellent and 46.8 % expressed Good.

For Infrastructure 30.7 % expressed Excellent and 49.8 % expressed Good.

For Laboratory 30.5 % expressed Excellent and 49.0 % expressed Good.

About faculty performance 38.6 % expressed Excellent and 47.6 % expressed Good.

About Library 40.0 % expressed Excellent and 43.7 % expressed Good.

About canteen 8.6 % expressed Excellent and 33.6 % expressed Good. The performance of canteen was very bad because only during the Academic year July 2015, we got our own canteen in our campus and many of our Alumnus could not experience it.

For Administrative office staff 15.8 % expressed Excellent and 41 % expressed Good.

For Hostel facilities 11.4 % expressed Excellent and 44.9 % expressed Good.

About Admission Procedure 21.5 % expressed Excellent and 52 % expressed Good.

For Fee structure 36.1 % expressed Excellent and 48.1 % expressed Good.

For Campus environment 56.8 % expressed Excellent and 33.2 % expressed Good.

About Job and placement opportunity 11.5 % expressed Excellent and 34.6 % expressed Good.

For Opportunity /Guidance for higher studies 26.6 % expressed Excellent and 41.7 % expressed Good.

For Overall performance of the college 33.4 % expressed Excellent and 50.20 % expressed Good.

Overall Feedback Analysis

The various graphs present the different views expressed by Alumni with regard to their perception on the quality of the educational institution. Most of the Alumni rated campus environment as excellent. Dissatisfaction expressed by the alumni as made out from some of the ratings of the parameters have been noted and suitable measures will be adopted to address the grievances. Over all 83.60% of the participants are happy with the performance and development of the college and marked good or satisfactory. Job and placement cells need to be strengthened and the college has already taken the steps to interact with the industries for inhouse training and better placement opportunities.